



Modular Housing Units: A New Approach for Homelessness Reduction Through Alternative Sheltering

Theo Heilman
Capstone II
Interior Design BFA
Rochester Institute of
Technology



Committee Chair

Isabella Trindade
B.Arch, M.Arch, PhD
Professor:
Rochester Institute of
Technology



Committee Member

Michael Rood LMSW, LCSW
Clinical Assistant Professor
Nazareth College
Co-Chair Homelessness
Services Network, Rochester NY
Region



Committee Member

Tori Vick
BEDA, B.Arch
Emerging Professional
LS3P

Table of Contents

01.

Thesis Review

03.

Research Agenda

02.

Literature Review

04.

Creative Agenda

01. Thesis Review

Thesis Question

Can Modular Housing Units provide an approach utilizing cost effective and sustainable methods, to create an alternative to current homeless sheltering?

Thesis Relevance

- **Chronic homelessness reduction benefits the community as a whole by:**



**reducing economic
impact of social services**



**increasing access and reducing
costs of healthcare**



**generating housing
opportunities**

Hypothesis and Objectives

Hypothesis:

Modular Housing Units can provide an approach utilizing cost effective and sustainable methods, to create an alternative to current chronically homeless sheltering

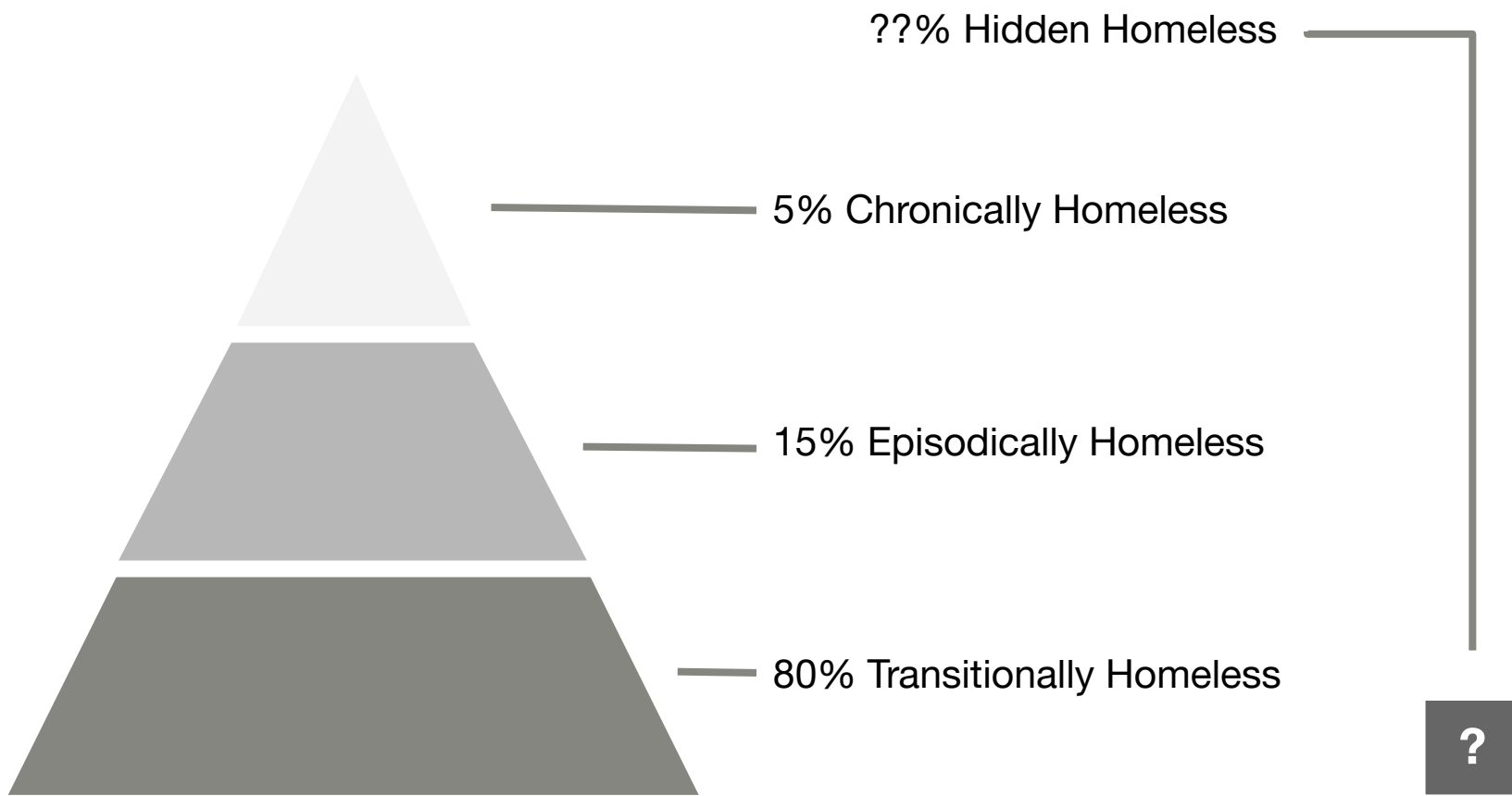
Objective:

Identify the necessary components and characteristics Modular Housing Units must utilize to ensure cost effective and sustainable methods, while successfully creating an alternative to sheltering the chronically homeless.

02. Literature Review

Types of Homelessness

- 4 Types of Homelessness: transitional, hidden, episodic, and chronic
- Transitional is the most common followed by episodic, hidden, and chronic
- Emergency Shelters typically serve all types but chronic
- Chronically homeless individuals are the most susceptible to health and safety risks of all homeless individuals



Chronic Homelessness

- **Chronic homelessness is defined as:**

“ a single individual (or head of household) with a disabling condition who has either:

Experienced homelessness for longer than a year, during which time the individual may have lived in a shelter, Safe Haven, or a place not meant for human habitation.

OR

Experienced homelessness four or more times in the last three years.”

Sheltering Types

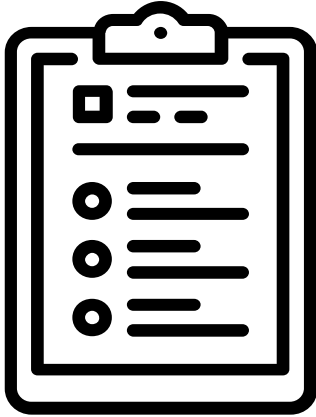
- Four main types of homeless sheltering: transitional, rapid re-housing (RRH), permanent supportive housing (PSH), and emergency sheltering
- Rapid rehousing rehouses people as fast as possible, while transitional offers stays ranging from 6-24 months, and permanent rehousing is a permanent supportive solution
- Emergency shelters are often the first line of defense and provide services for those experiencing immediate crisis

Emergency Sheltering

- **The US HUD defines Emergency Sheltering as:** “any facility, the primary purpose of which is to provide a temporary shelter for the homeless in general or for specific populations of the homeless and which does not require occupants to sign leases or occupancy agreements”
- A fundamentally downstream service that is utilized as an upstream service

03. Research Agenda

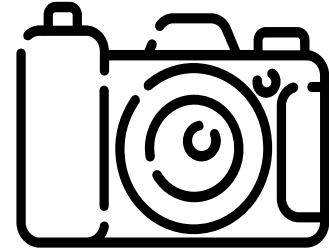
Research Methods



Surveys



Interviews



Site Analysis

Survey Statistics

Key Demographic Data (30 Responses):

Gender: 70% Male, 30% Female

Race: 50% White, 40% Black, 10% Mixed

Age: 60% 25-49, 20% 18-24, 20% 50+

Household: 70% Alone, 30% Other Adults

Time Homeless: 66.6% >1 Year, 33.3% 0-12 Months

Survey Statistics

Unsheltered: 90% Yes, 10% No

Type: 50% Encampment, 30% Street, 10% Car, 10% Shelter

Sanitary Access: 50% Toilet, 20% Toilet & Shower, 30% N/A

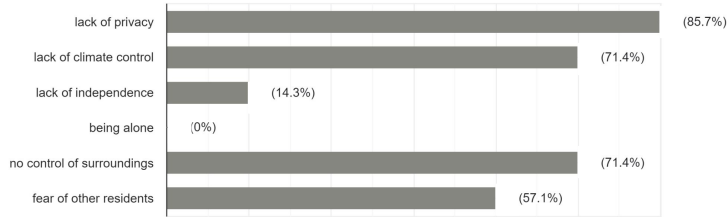
Utility Access: 60% Water, 20% Electrical & Water, 20% N/A

Safety Concern: 50% Yes, 50% No

Survey Statistics

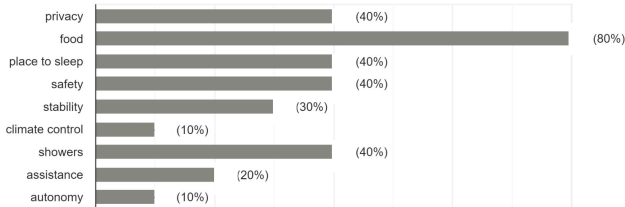
If Yes, What Makes You Feel Unsafe?

30 Responses



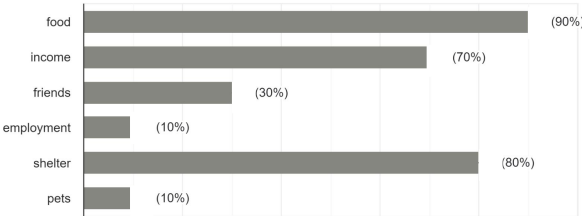
What Do You Need Out of a Shelter?

30 Responses



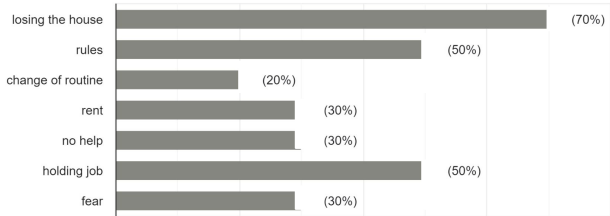
What Makes You Feel Supported?

30 Responses



What Worries You About Being Re-Housed?

30 Responses



Interview Summary

Nick Coulter PCHO:

- Site needs increased security and monitoring to deal with unforeseen situations. Cited a resident death and unit fire
- Unit is needed for resident and site management where a staff member may stay 24/7
- Climate control, water, and electrical access all needed to make the site truly habitable

Site Information

Sun Conditions:

165 days of sun, 40 days under national average

June:

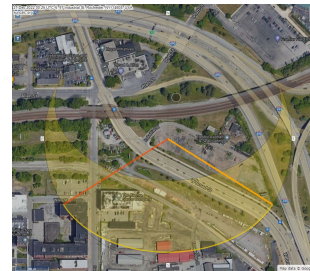
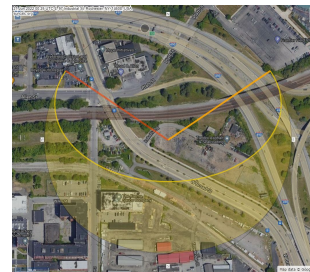
Average day length of 15.3 hours

Average sunrise and sunset being 5:30 AM
and 8:49 PM

December:

Average day length of 9.1 hours

Average sunrise and sunset being 7:33 AM
and 4:37 PM



Sun Diagram (Top: June Bottom: December)

continued.

Wind Conditions:

Higher winter wind speeds

June

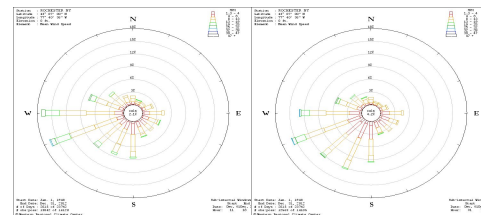
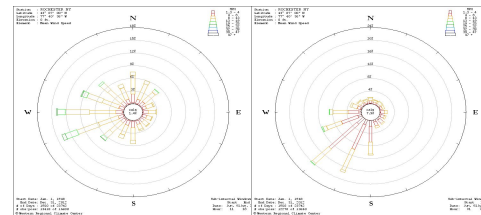
Primarily Southwest

Average speeds of 11.2 mph, gusts to 32mph

December:

Primarily West

Average speeds of 15.2 mph, gusts to 39mph



Wind Speed (Top: June Bottom: December)

continued.

Precipitation Conditions:

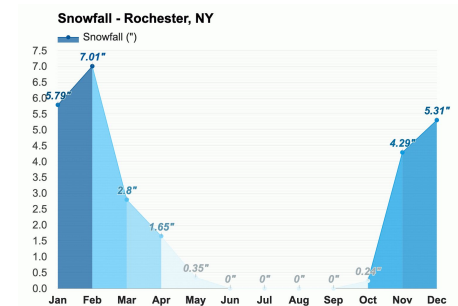
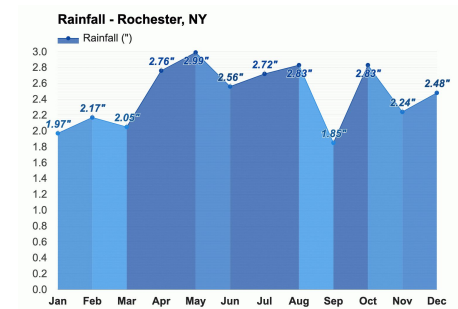
Average 133.7 days of precipitation a year, 31 days above the national average, January has the most precipitation

Rain

Average 33.8 inches of rain, below the national average

Snow

Average 84.3 inches of snow, quadruple the national average of 27.8 inches



continued.

Temperature Conditions:

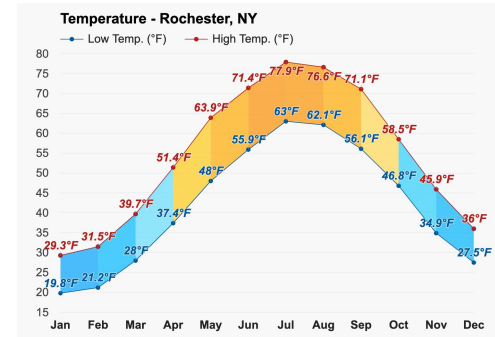
Average high temperature of 81.4°F, 4° lower than the national average

June:

Average high of 73°F and a low of 57°F

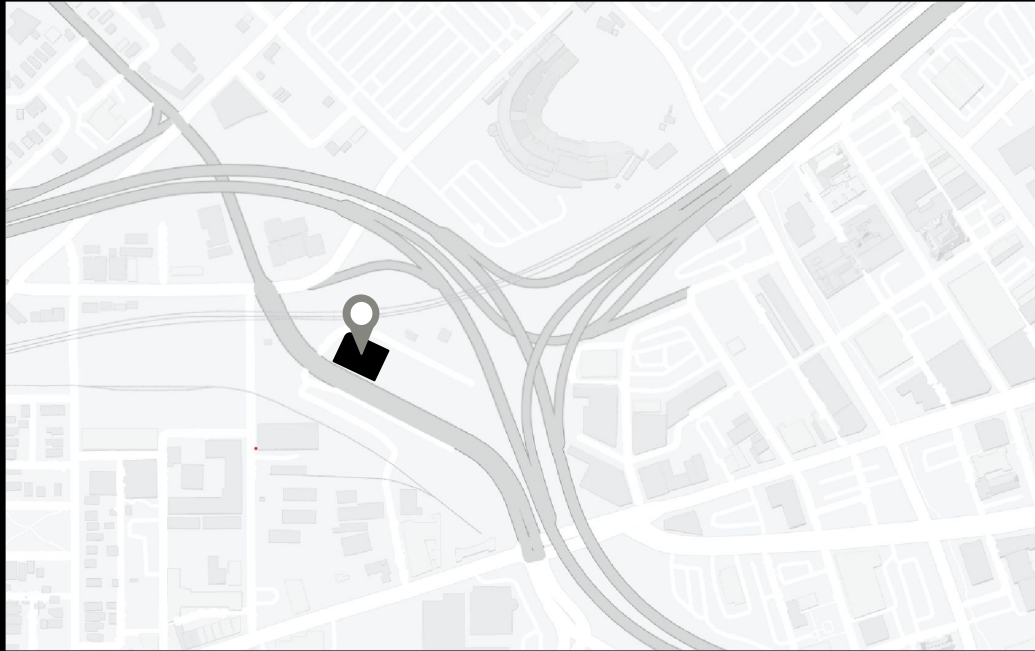
December:

Average high of 38°F and a low of 27°F



04. Creative Agenda

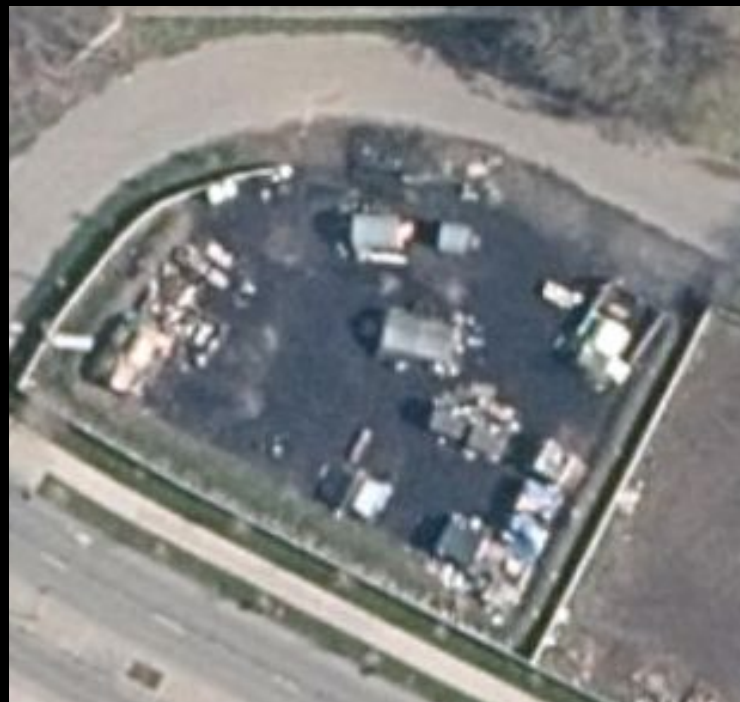
Current Site



continued.

Peace Village

- Permanent Homeless Encampment in Rochester, NY
- 97 Industrial St in the Susan B Anthony
- Community Land Trust Site, PCHO managed



continued.

Current Conditions:

- 12 units on site, 9 fully functional
- No onsite office for security/help
- No water or electrical access



continued.



Project Goals

A prototype design focusing on a full redesign of a prospective, in-need chronically unsheltered homeless encampment in downtown Rochester, New York.

continued.

Site Redesign:

Site Layout

Spatial Planning

Community Involvement

Use of Vertical Space

Landscape Design

Security Design

continued.

Creation of 6 Unit Types:

Housing Unit

Community Unit

Office Unit

Hygiene Unit

Development Unit

Garden Unit

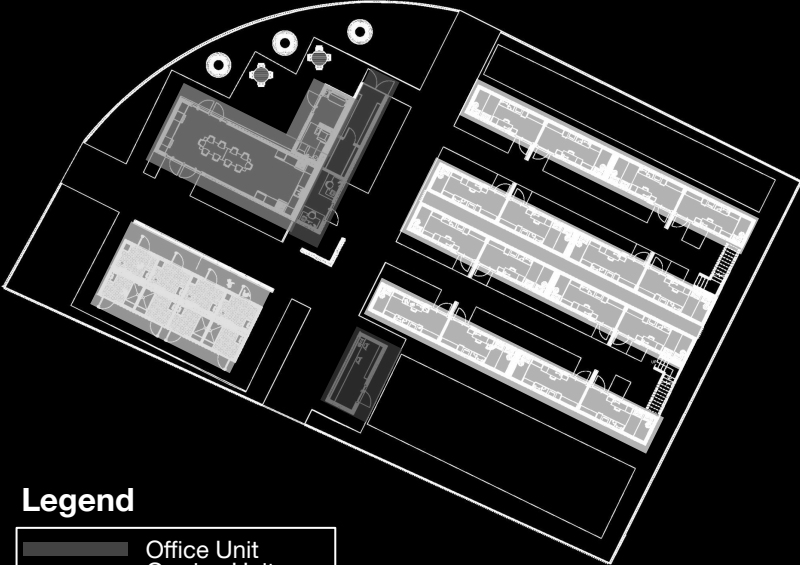
How?

Shipping Containers

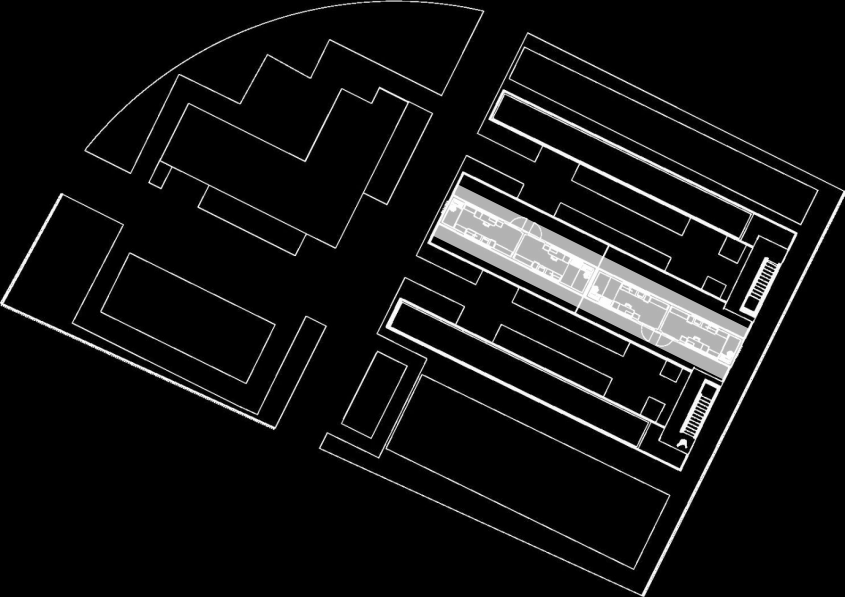
- The new site is comprised of 19 recycled shipping containers
 - 4 20' Containers
 - 15 40' Containers
- Incremental sizes allow for ease of installation and maximum repeatability
- Recycled containers are inexpensive and durable
- Constructed of durable, “self healing” corten steel

Site

Site Plan



Ground Level



Upper Level

Legend

	Office Unit
	Garden Unit
	Community Unit
	Hygiene Unit
	Housing Unit

Site Renders



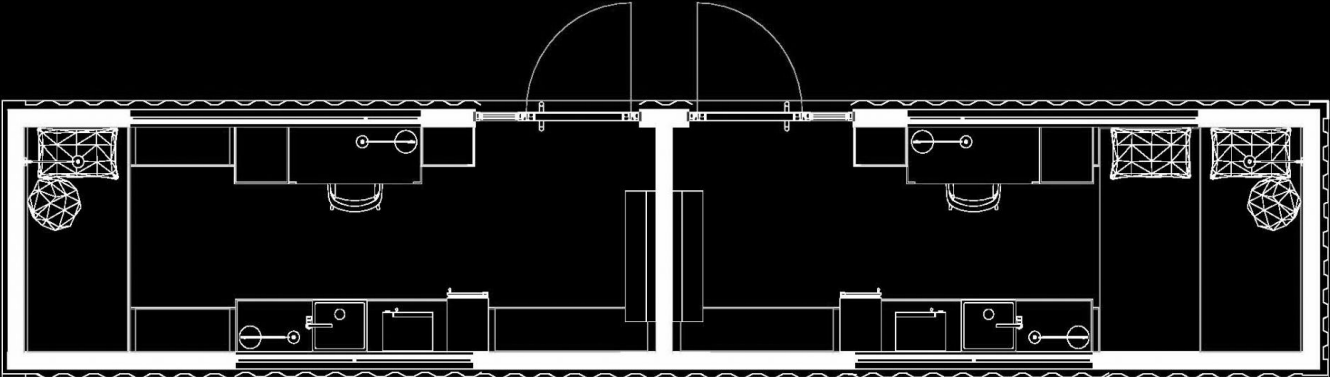
Site Housing



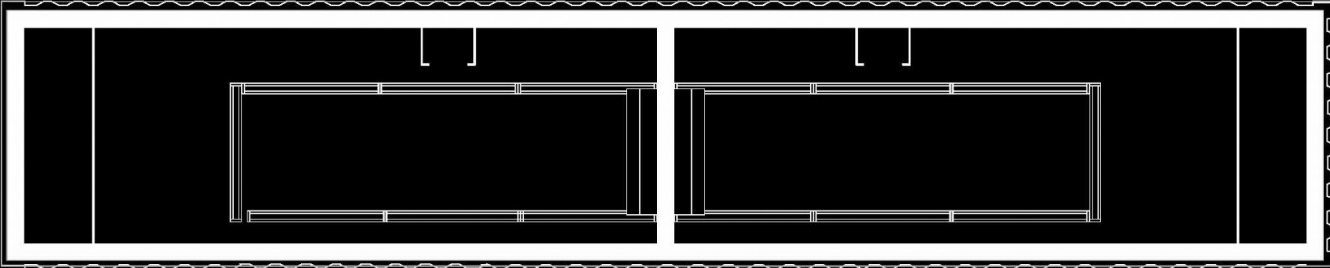
Site Outdoor Lounge

Housing Unit

Housing Unit Drawings

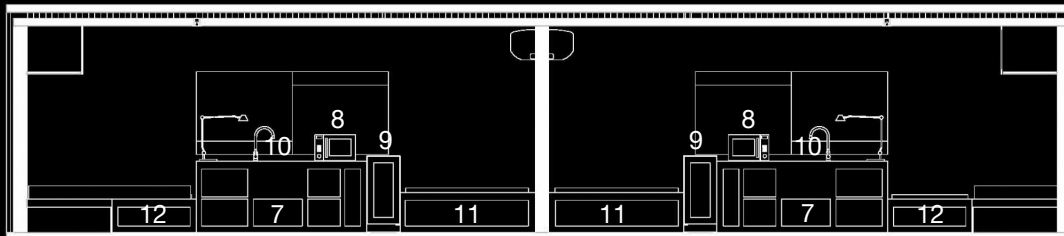


Floor Plan



RCP

continued.



7. Kitchenette Storage

8. Microwave

9. Mini Fridge

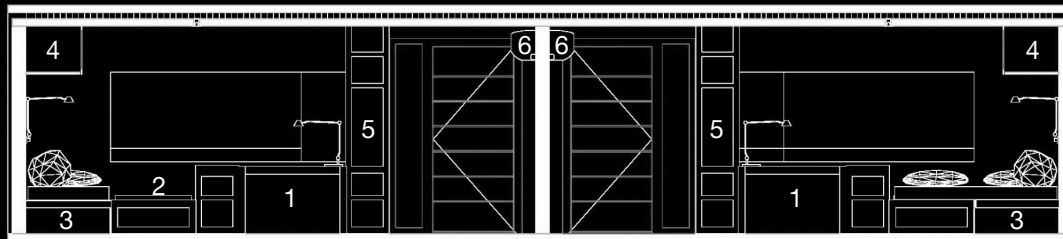
10. Sink

11. Bench

12. Seating/Storage

Kitchenette Section

- 1. Workstation
 - 2. Seating/Storage
 - 3. Sleeping Space
 - 4. Overhead Storage
 - 5. Wardrobe
 - 6. Climate Control
- Workstation Section**



Housing Unit Renders



Housing Lower



Housing Upper

continued.



Housing Workstation

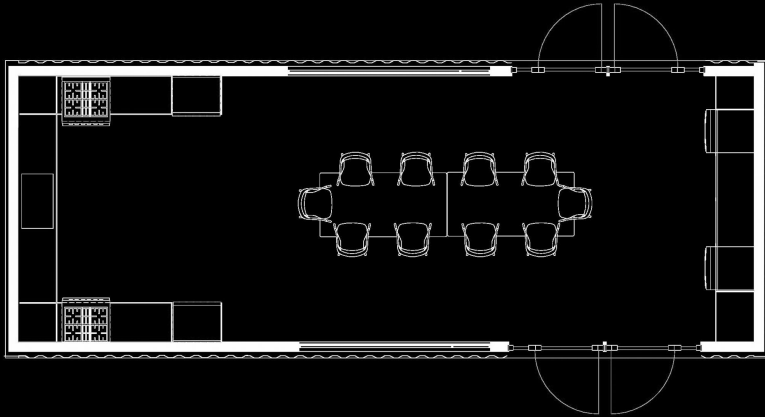


Housing Kitchenette

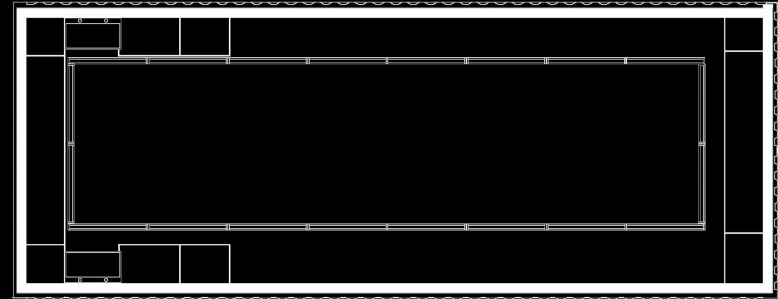
Community Unit



Community Unit Drawings

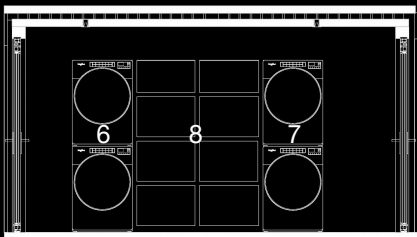


Floor Plan

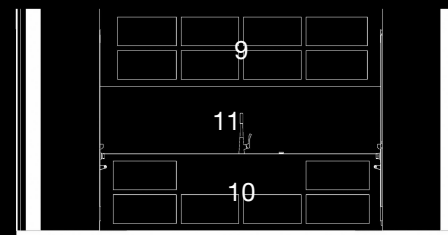


RCP

continued.

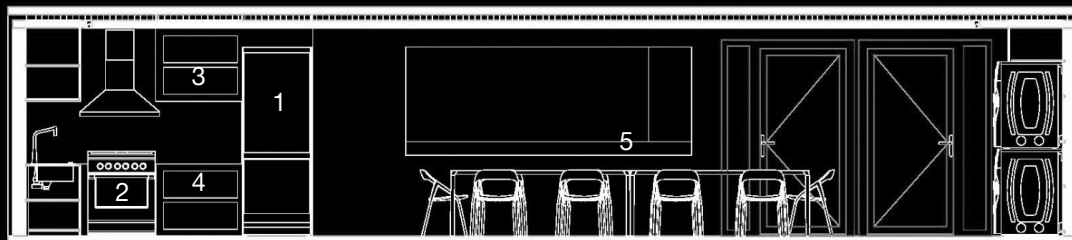


6-7. Washer/Dryer Stacks
8. Dry Storage
Laundry Section



9-10. Dry Storage
11. Sink
Kitchen Cross Section

1. Refrigerator
2. Stove
3-4. Dry Storage
5. Community Seating
Longitudinal Section



Community Unit Renders



Community Unit Outdoor

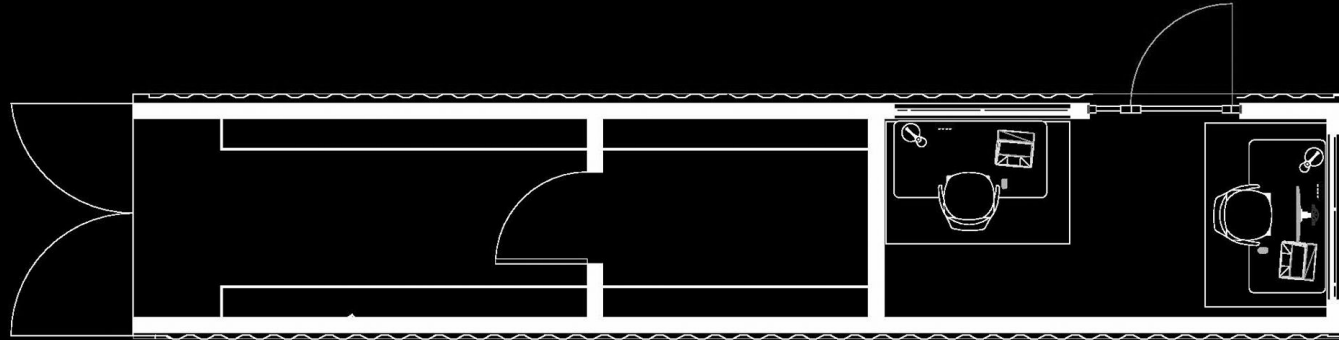


Community Unit Indoor

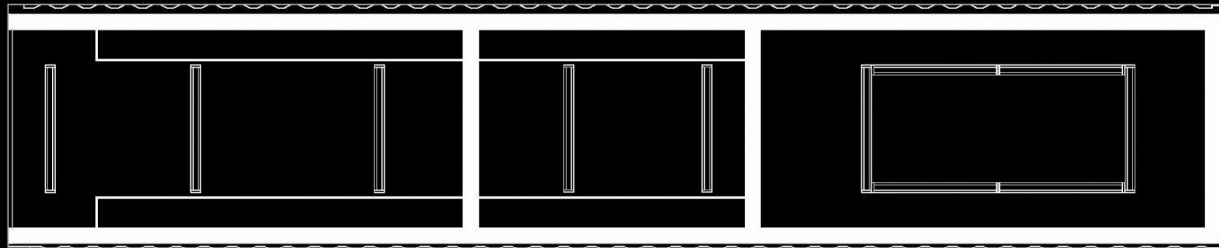
Office Unit



Office Unit Drawings



Floor Plan



RCP

Office Unit Renders



Office Unit Outdoor

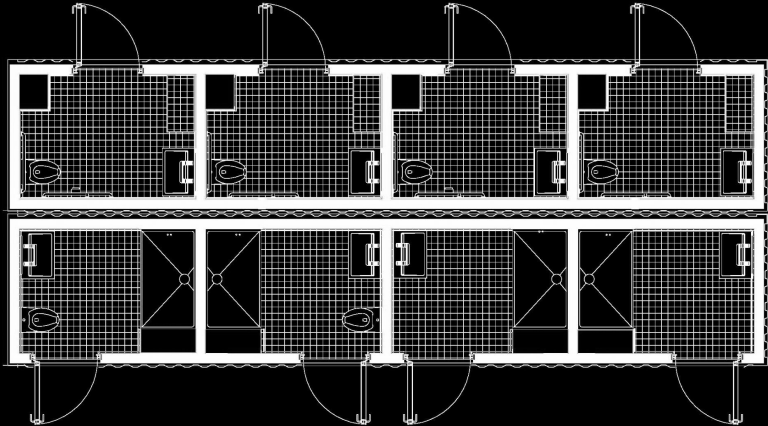


Office Unit Indoor

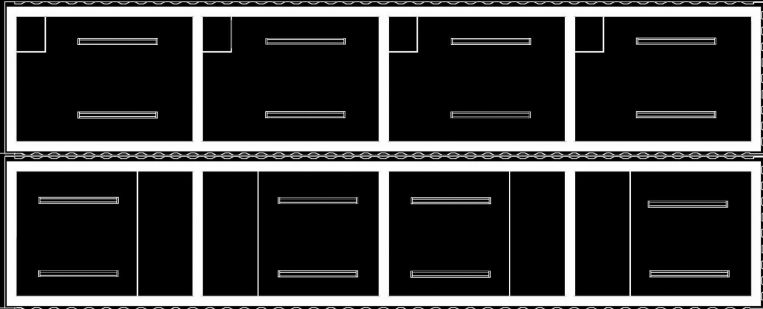
Hygiene Unit



Hygiene Unit Drawings

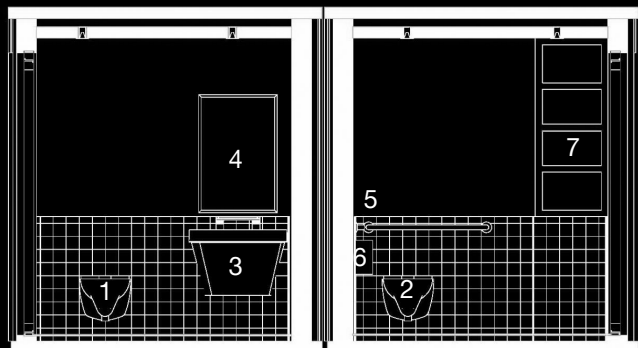


Floor Plan



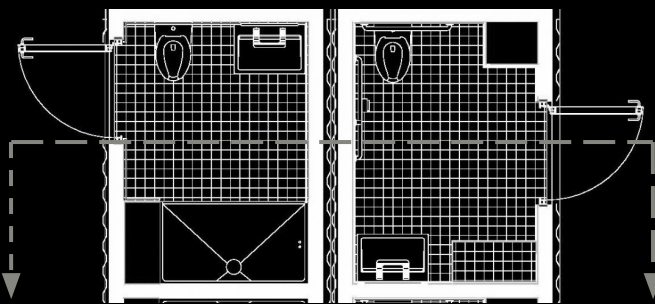
RCP

continued.



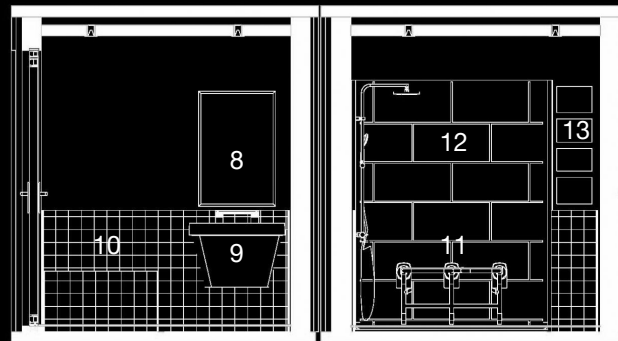
- 1-2. Toilets
- 3. Sink
- 4. Mirror
- 5. ADA Grab Bars
- 6. Toilet Paper Holder
- 7. Storage

Cross Section



- 8. Mirror
- 9. Sink
- 10-11. Bench
- 12. Shower
- 13. Storage

Cross Section



Hygiene Unit Renders



Toilet Unit

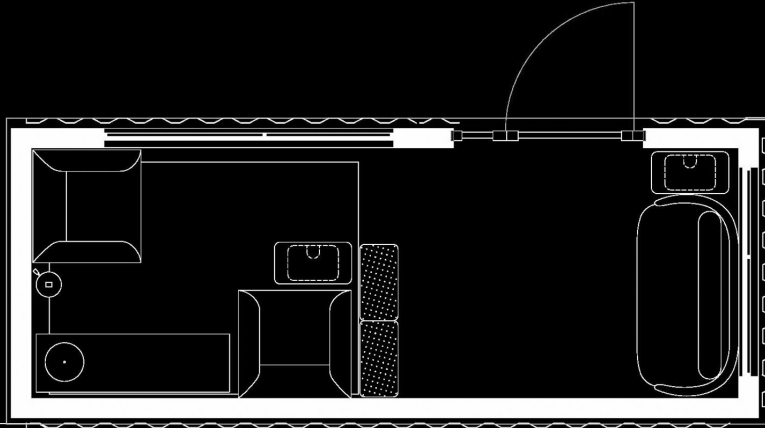


Shower Unit

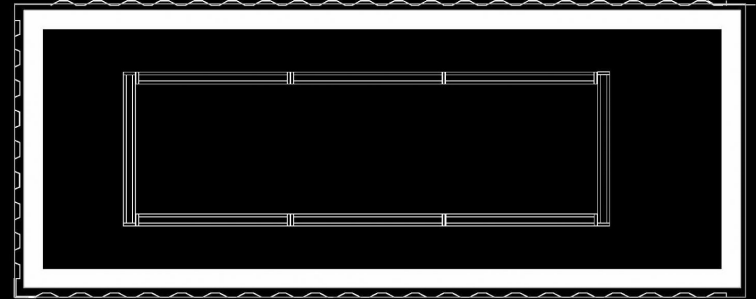
Development Unit



Development Unit Drawings



Floor Plan



RCP

Development Unit Renders

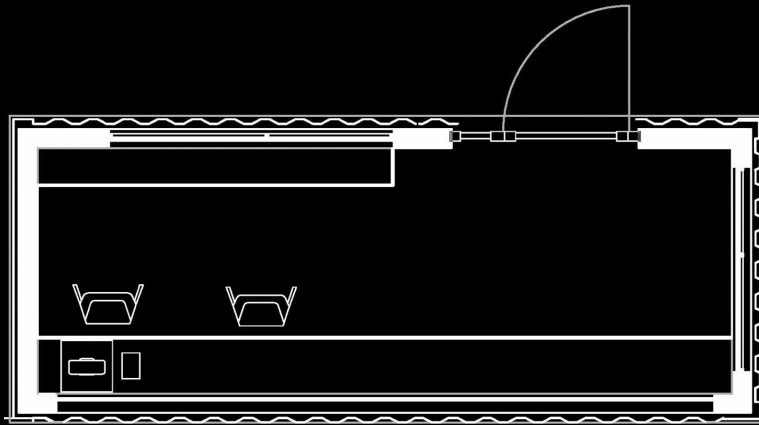


Development Unit

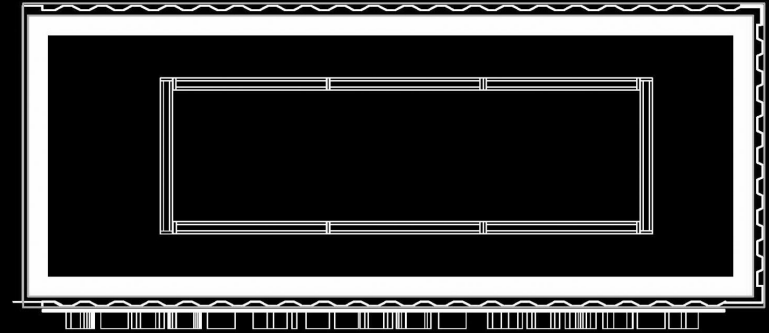
Garden Unit



Garden Unit Drawings



Floor Plan



RCP

Garden Unit Renders



Garden Unit Outdoor



Garden Unit Indoor

Thank You